


**MODEL:** CMS-3012-18T | **DESCRIPTION:** SPEAKER

**FEATURES**

- 8 ohm
- 1.0 W
- through hole

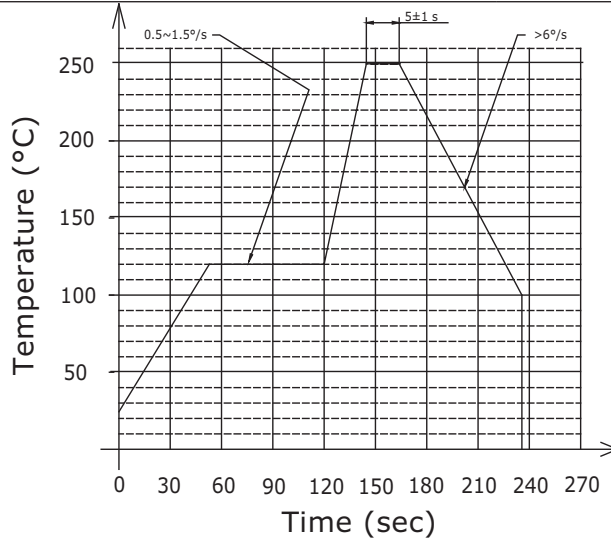

**SPECIFICATIONS**

parameter	conditions/description	min	typ	max	units
input power	max power: 1 minute on, 2 minutes off, 10 cycles		1.0	1.3	W
impedance	at 1.0 kHz, 1 Vrms	6.8	8	9.2	$\Omega$
coil resistance		6.8	8	9.2	$\Omega$
resonant frequency [Fo]		960	1,200	1,440	Hz
frequency response		500		4,000	Hz
sound pressure level	at 2.0 KHz, 0.25 W, 10 cm	96	99	102	dB
	at 2.0 KHz, 1.0 W, 10 cm	102	105	108	dB
distortion	at 2.0 KHz, 0.1 W, sine wave			5	%
buzz, rattle, etc.	must be normal at sine wave, frequency range			2.83	V
polarity	cone moves forward w/ positive dc current to "+" terminal				
dimensions	$\varnothing 30 \times 12.8$				mm
magnet	Nd-Fe-B				
housing material	MPPD				
cone material	PET				
terminal	pins				
weight			9		g
operating temperature		-40		85	$^{\circ}\text{C}$
storage temperature		-40		85	$^{\circ}\text{C}$
RoHS	yes				

Notes: 1. All specifications measured at 15-35 $^{\circ}\text{C}$ , humidity at 45-85%, under 86-106 kPa pressure, unless otherwise noted.

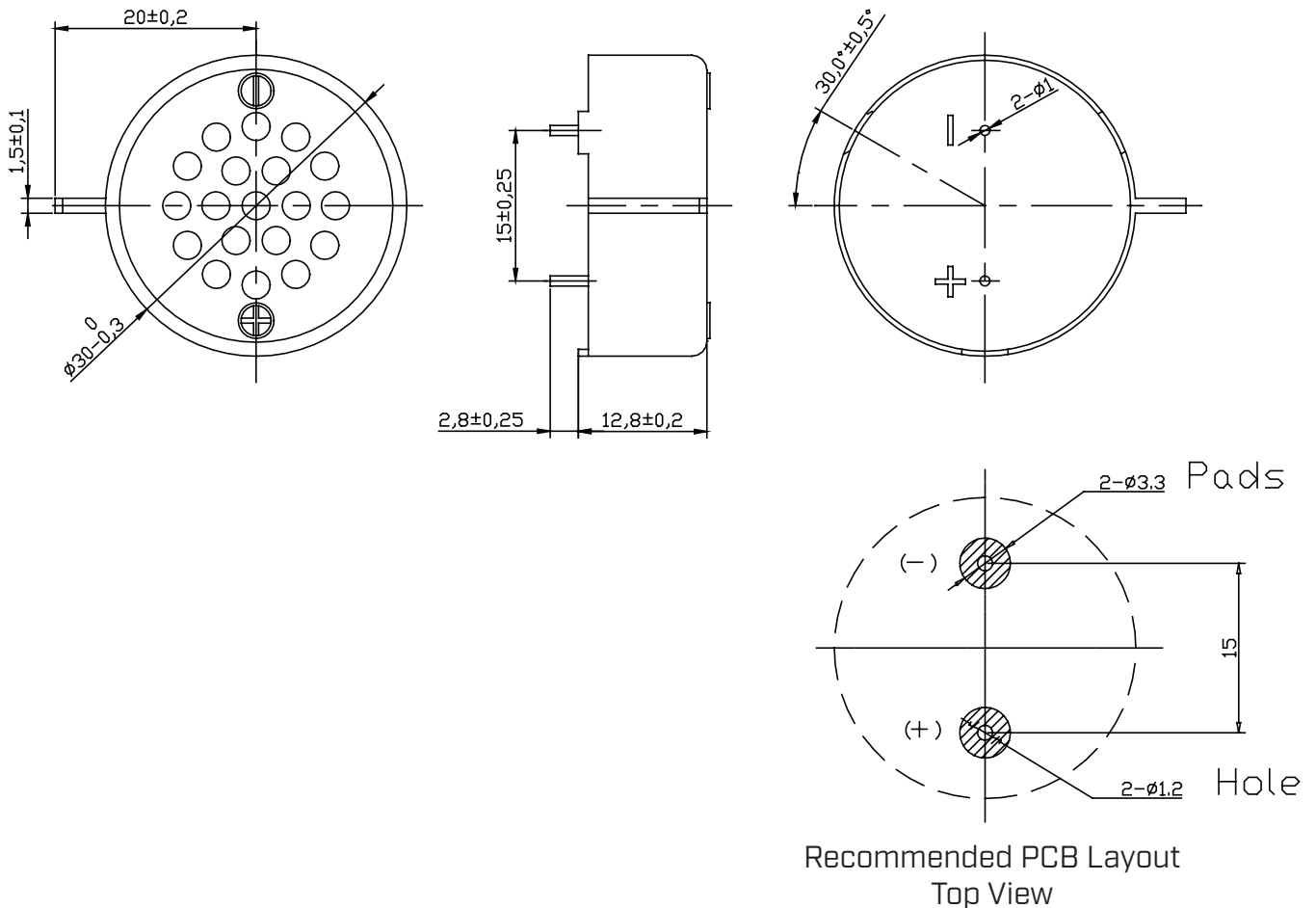
## SOLDERABILITY

parameter	conditions/description	min	typ	max	units
hand soldering	for 3-5 seconds	370	380	390	°C
wave soldering	see recommended wave soldering profile			250	°C



## MECHANICAL DRAWING

units: mm  
tolerance: ±0.3 mm

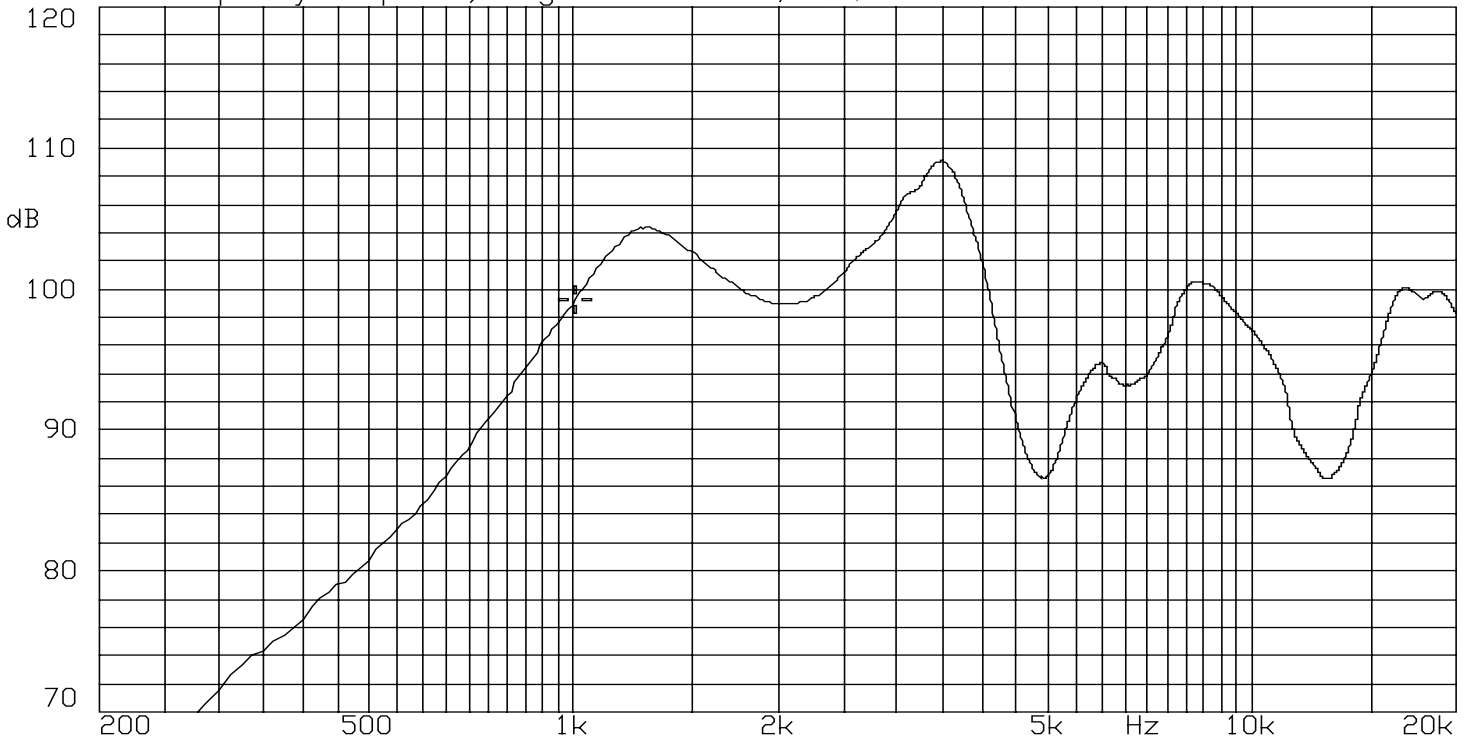


## RESPONSE CURVES

### Frequency Response Curve

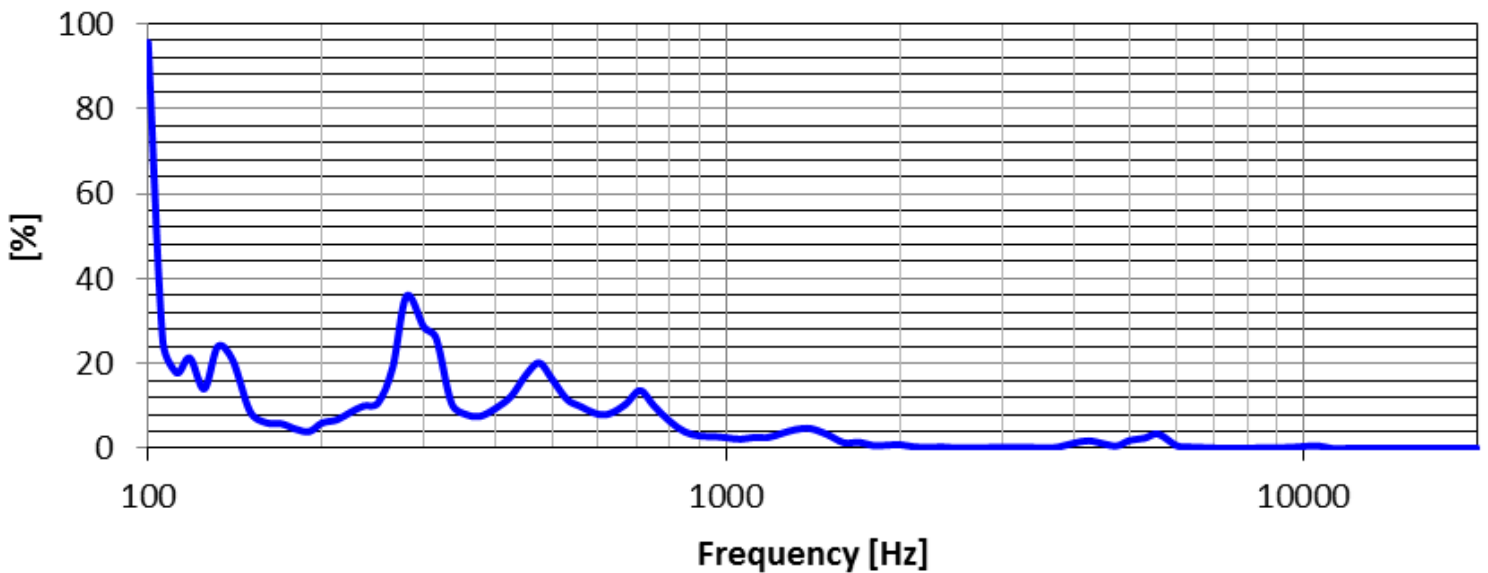
Test Conditions: 0.25 W / 10 cm

A: Frequency Response, Magn dB re 20.00 $\mu$ Pa/V



### Total Harmonic Distortion Curve

Test Conditions: 0.25 W / 10 cm



## REVISION HISTORY

rev.	description	date
1.0	initial release	12/07/2023
1.01	CUI Devices rebranded to Same Sky	09/11/2024

The revision history provided is for informational purposes only and is believed to be accurate.



Same Sky offers a one (1) year limited warranty. Complete warranty information is listed on our website.

Same Sky reserves the right to make changes to the product at any time without notice. Information provided by Same Sky is believed to be accurate and reliable. However, no responsibility is assumed by Same Sky for its use, nor for any infringements of patents or other rights of third parties which may result from its use.

Same Sky products are not authorized or warranted for use as critical components in equipment that requires an extremely high level of reliability. A critical component is any component of a life support device or system whose failure to perform can be reasonably expected to cause the failure of the life support device or system, or to affect its safety or effectiveness.

[sameskydevices.com](https://www.sameskydevices.com)