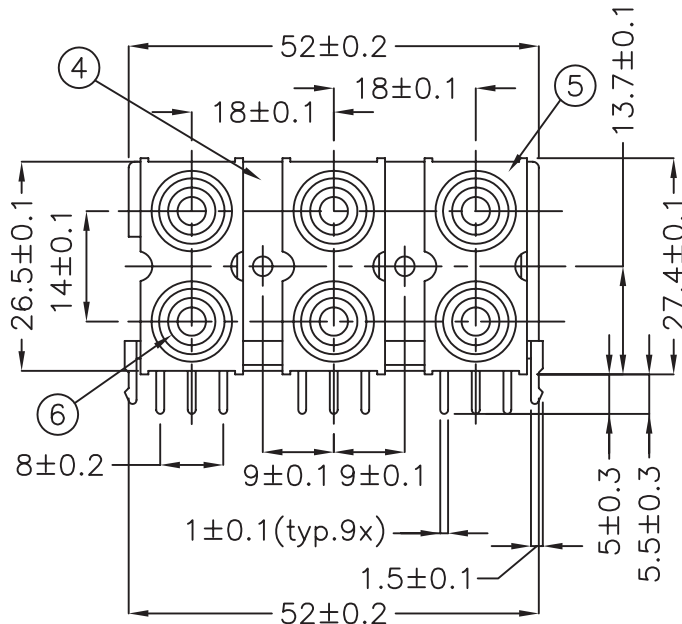
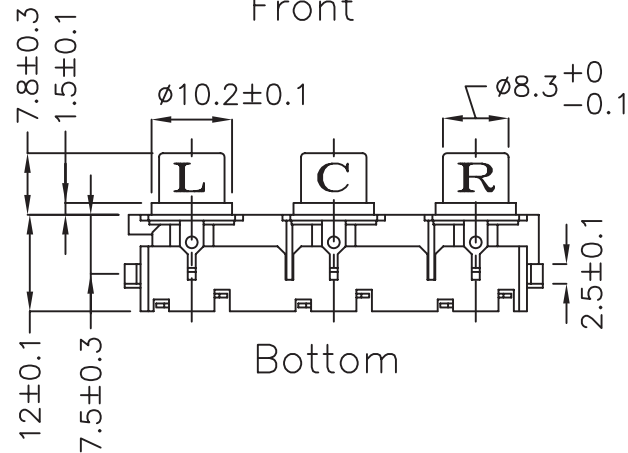


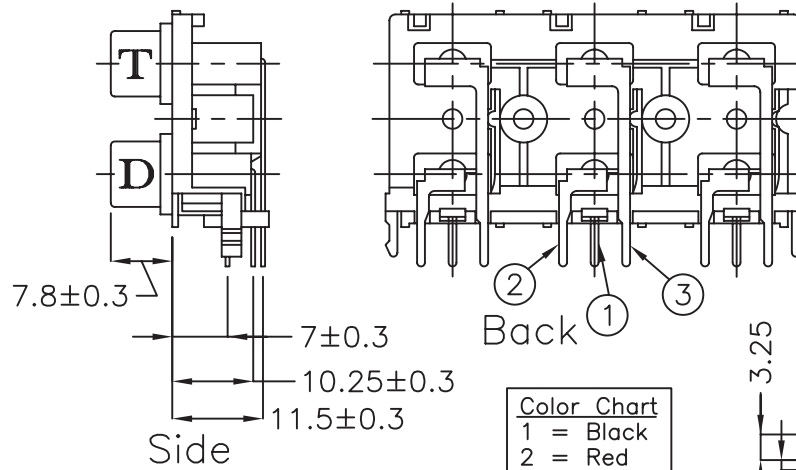
Additional Resources: [Product Page](#) | [3D Model](#)



Front

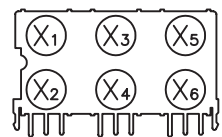


Bottom

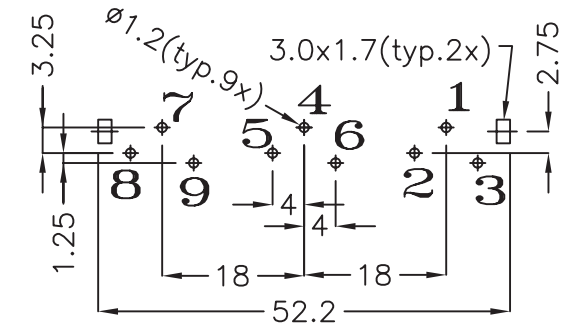


RoHS  
Compliant

Color Chart	
1	= Black
2	= Red
3	= White
4	= Yellow
5	= Blue
6	= Green



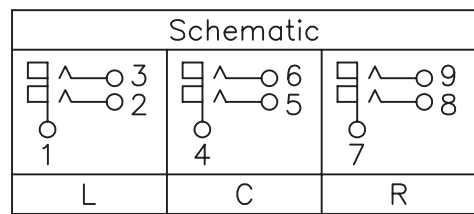
- Specifications:
1. Insulation Resistance: 100MΩ min. (initial)
  2. Contact Resistance (initial): 30mΩ max at 100mA(max) 1KHz.
  3. Dielectric Withstand Voltage: AC 500V, 60Hz for 1 minute.
  4. Insertion Force: 3Kgs max. Extraction Force: 0.08Kgs min.
  5. Humidity Test: 40±2. 90~95%, 48 hours.



PC Board Layout  
(Top View)

Color Index						
Part No.	Input X <sub>1</sub>	Input X <sub>2</sub>	Input X <sub>3</sub>	Input X <sub>4</sub>	Input X <sub>5</sub>	Input X <sub>6</sub>
RCJ-61212121	Red	Black	Red	Black	Red	Black
RCJ-61343434	White	Yellow	White	Yellow	White	Yellow
RCJ-61232323	Red	White	Red	White	Red	White
RCJ-61223344	Red	Red	White	White	Yellow	Yellow
RCJ-61X <sub>1</sub> X <sub>2</sub> X <sub>3</sub> X <sub>4</sub> X <sub>5</sub> X <sub>6</sub>	Color X <sub>1</sub>	Color X <sub>2</sub>	Color X <sub>3</sub>	Color X <sub>4</sub>	Color X <sub>5</sub>	Color X <sub>6</sub>

Example: (Black, Red, White, Yellow, Blue, Green)  
RCJ-61X<sub>1</sub> X<sub>2</sub> X<sub>3</sub> X<sub>4</sub> X<sub>5</sub> X<sub>6</sub> = RCJ-61123456



6	Input	PBT	6	See Color Index
5	Cover	ABS	3	Black Color
4	Base	ABS	1	Black Color
3	Terminal T	0.5t Brass	3	Silver Plated
2	Terminal D	0.5t Brass	3	Silver Plated
1	Earth Terminal (Barrel)	0.5t Brass	3	Nickel Plated
No.	Description	Material	Qty	Finish

6405 SW Rosewood St, Suite C  
Lake Oswego, OR 97035  
Phone: 877-323-3576  
Website: [www.sameskydevices.com](http://www.sameskydevices.com)

TITLE:  
**RCA Jack, 6 port, 2x3, Right Angle, PCB Mount**

PART NO. RCJ-61XXXXXX UNITS: Millimeters

DRAWN BY: Todd R. White APPROVED BY: SCALE: 1x